

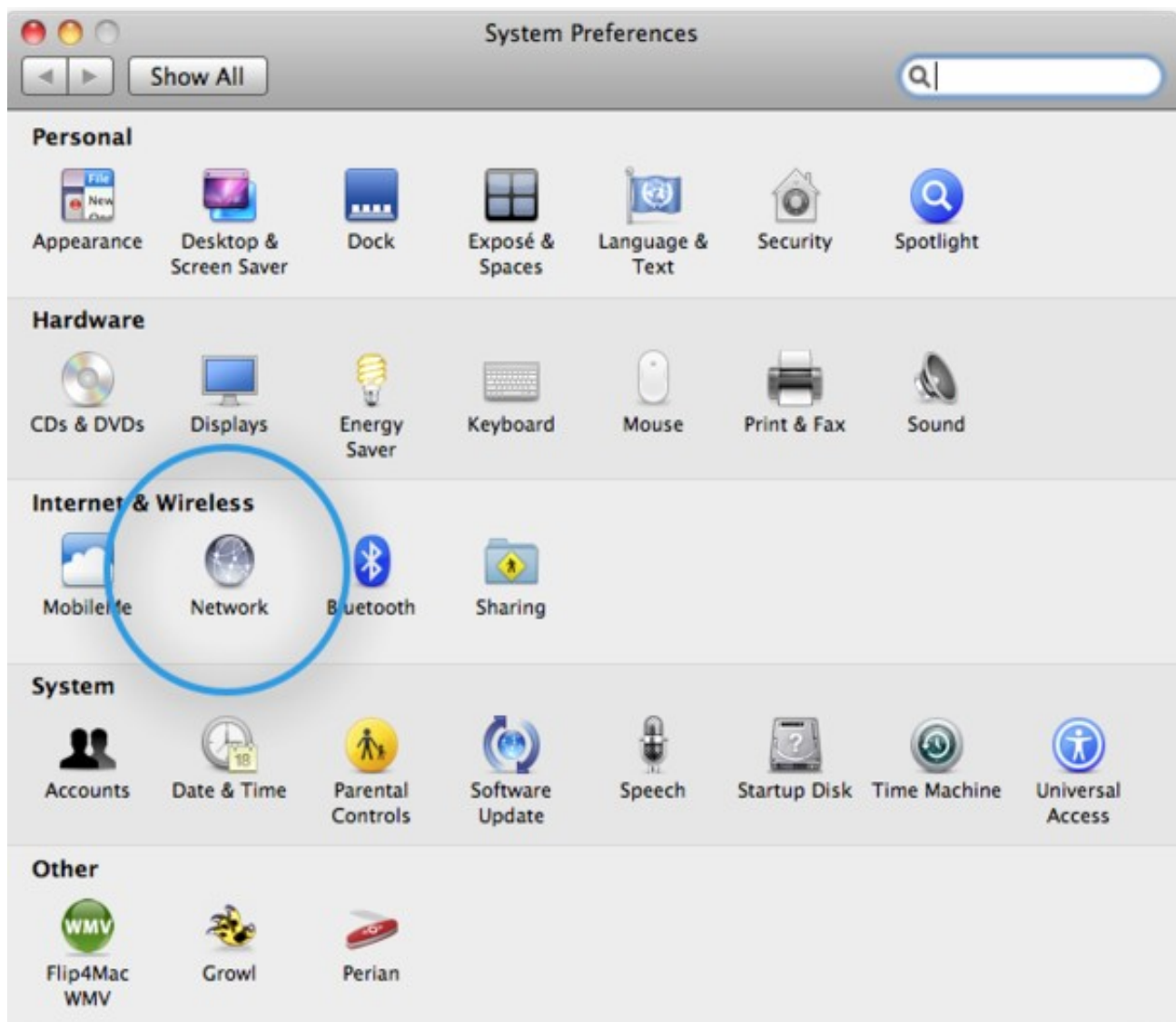
Configuring eduroam – Mac OS

Configuration steps

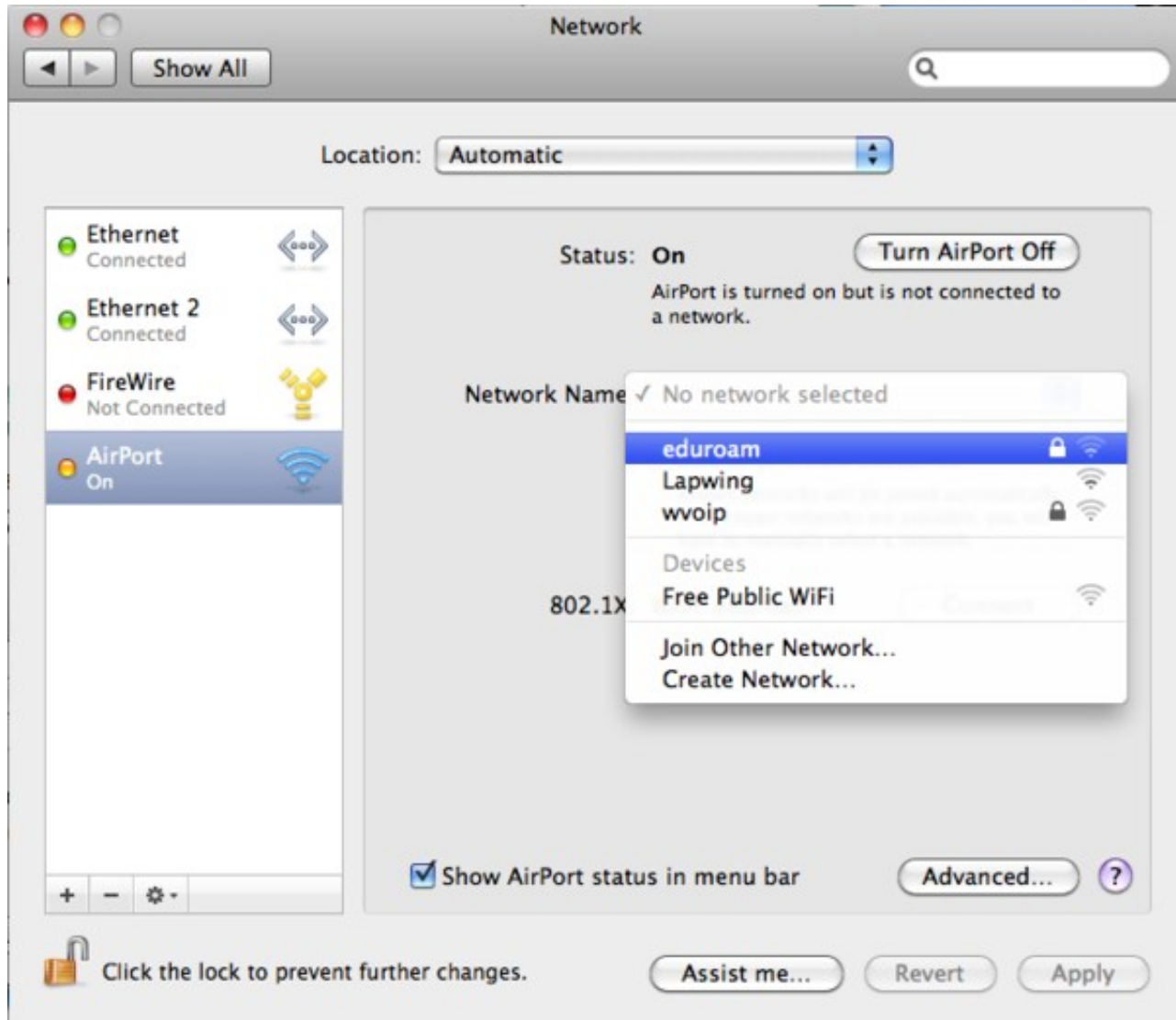
Make sure that you have your credentials (eduroam identifier and Network access token (username and password)) from your Network Administrator.

To get the list of networks

- Either select **eduroam** from the **AirPort** dropdown in the menu bar (you may need to select **Turn AirPort On** first)
- Or:-
 - i. Open **System Preferences**
 - ii. From **Internet & Wireless**, select **Network**



- Check that the **AirPort** connection is selected, then from the **Network Name:** drop down box select **eduroam**



- In the dialogue box that opens

The network "eduroam" requires a password.

User Name:

Password:

802.1X:

TLS Certificate:

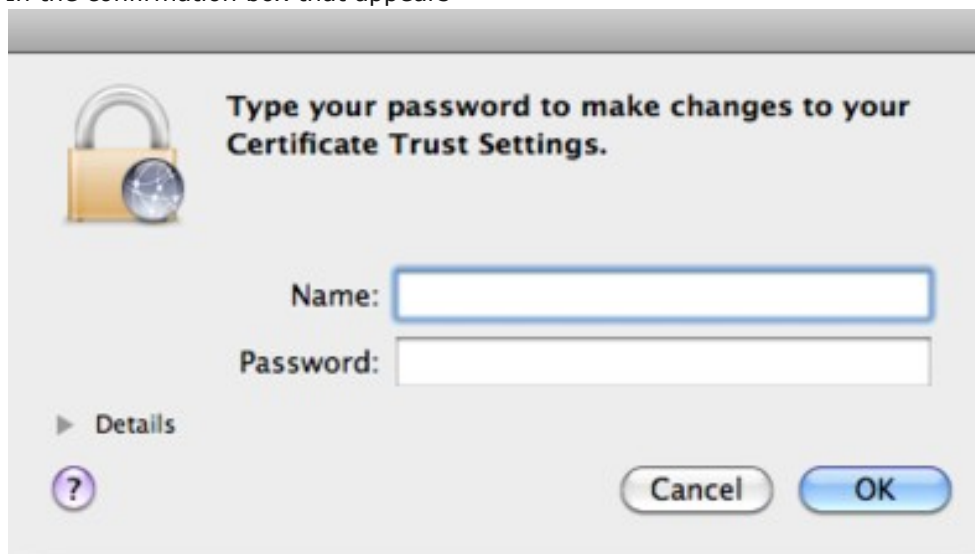
Remember this network

- enter your **eduroam identifier** (typically your *username* followed by *@institutionrealm.ac.ke*) in the **User Name** box
- enter your **Password** in the **Password box**
- leave **802.1X** as **Automatic**
- tick **Remember this network** if it not already ticked
- Select **OK**
- In the **Verify Certificate** dialogue box



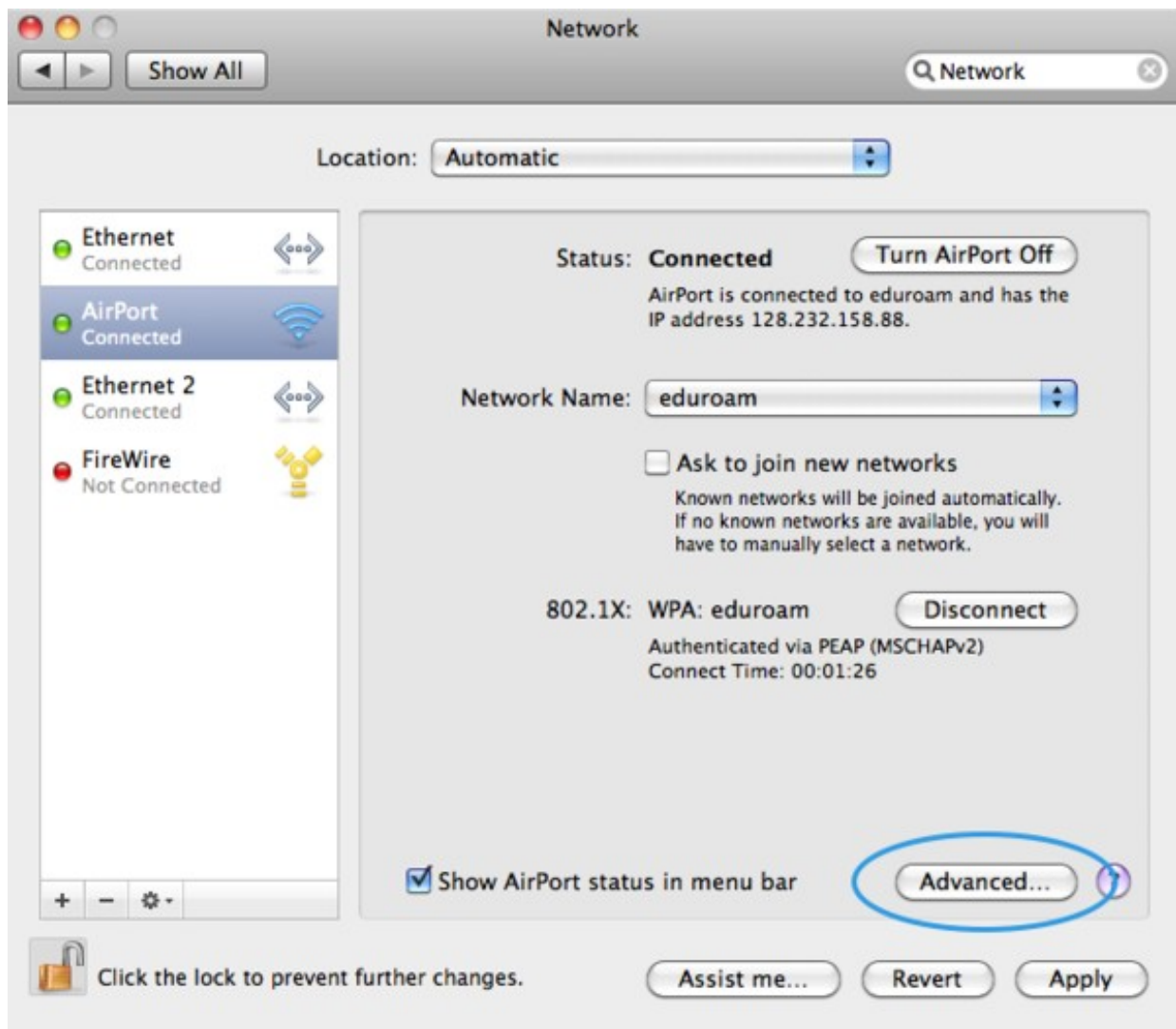
select **Continue**

- In the confirmation box that appears

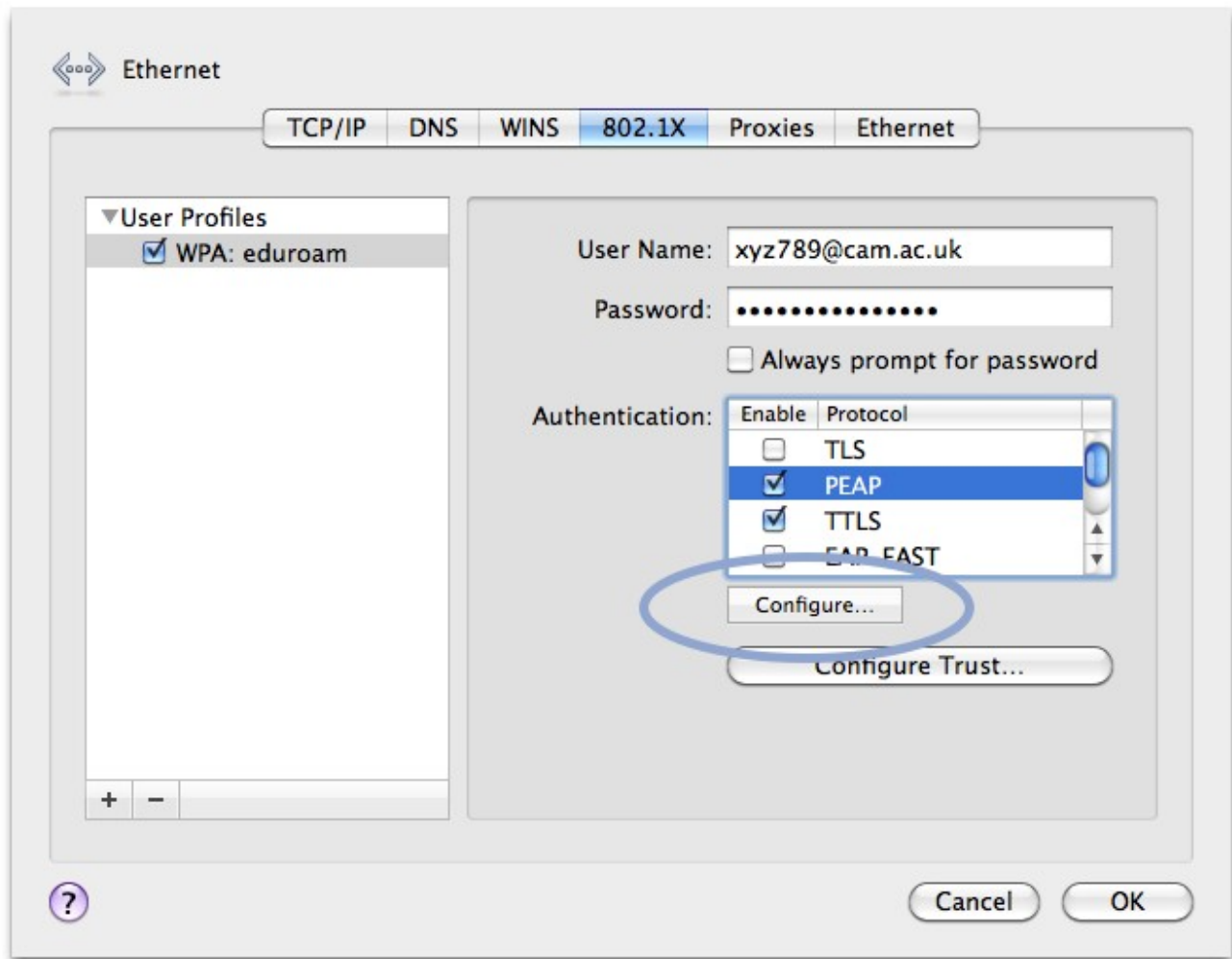


type your **Mac OS X username and password** (not the eduroam ones!) then select **OK**
If you started by opening the **System Preferences** (step 1.2), you will be dropped back into the Network pane.

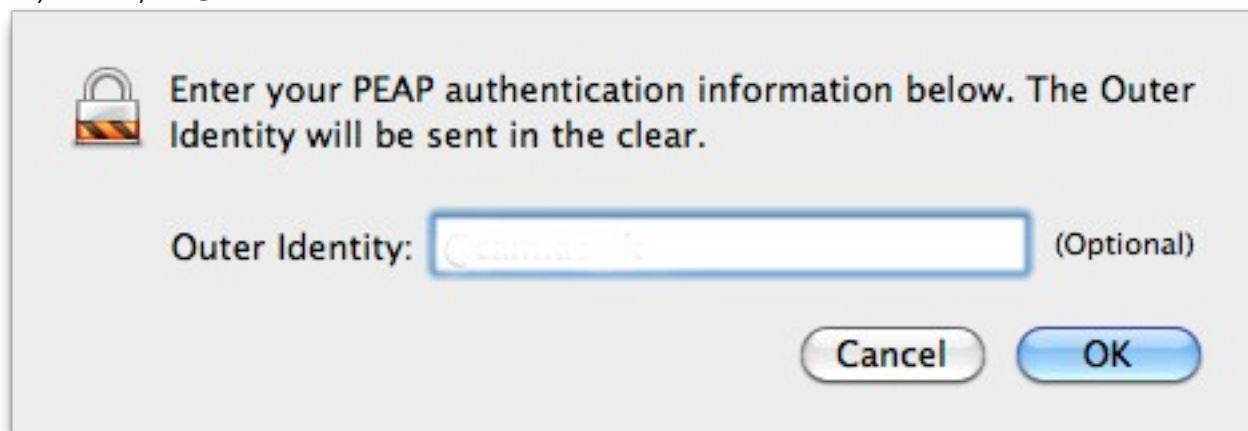
- Now you need to set the trust settings for the server
 - Select **Advanced**



Then choose the 802.1X pane. Ensure the **User Profile: eduroam** option is highlighted (if the profile does not appear then restart your Mac and continue from here). Make sure that **only PEAP** and **TLS** are enabled (uncheck anything else) and then select *Configure*

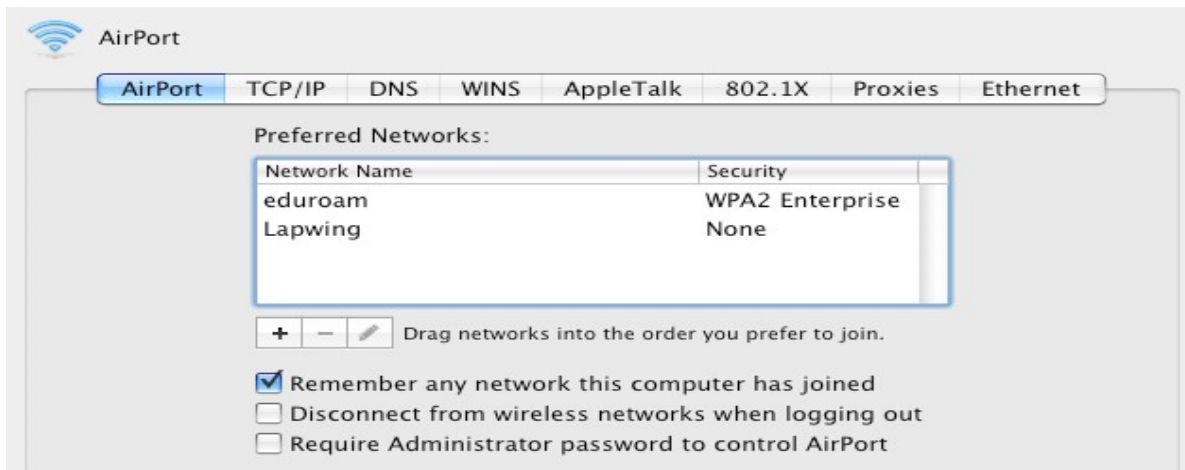


Set the *outer identity* identity to @realm.ac.ke



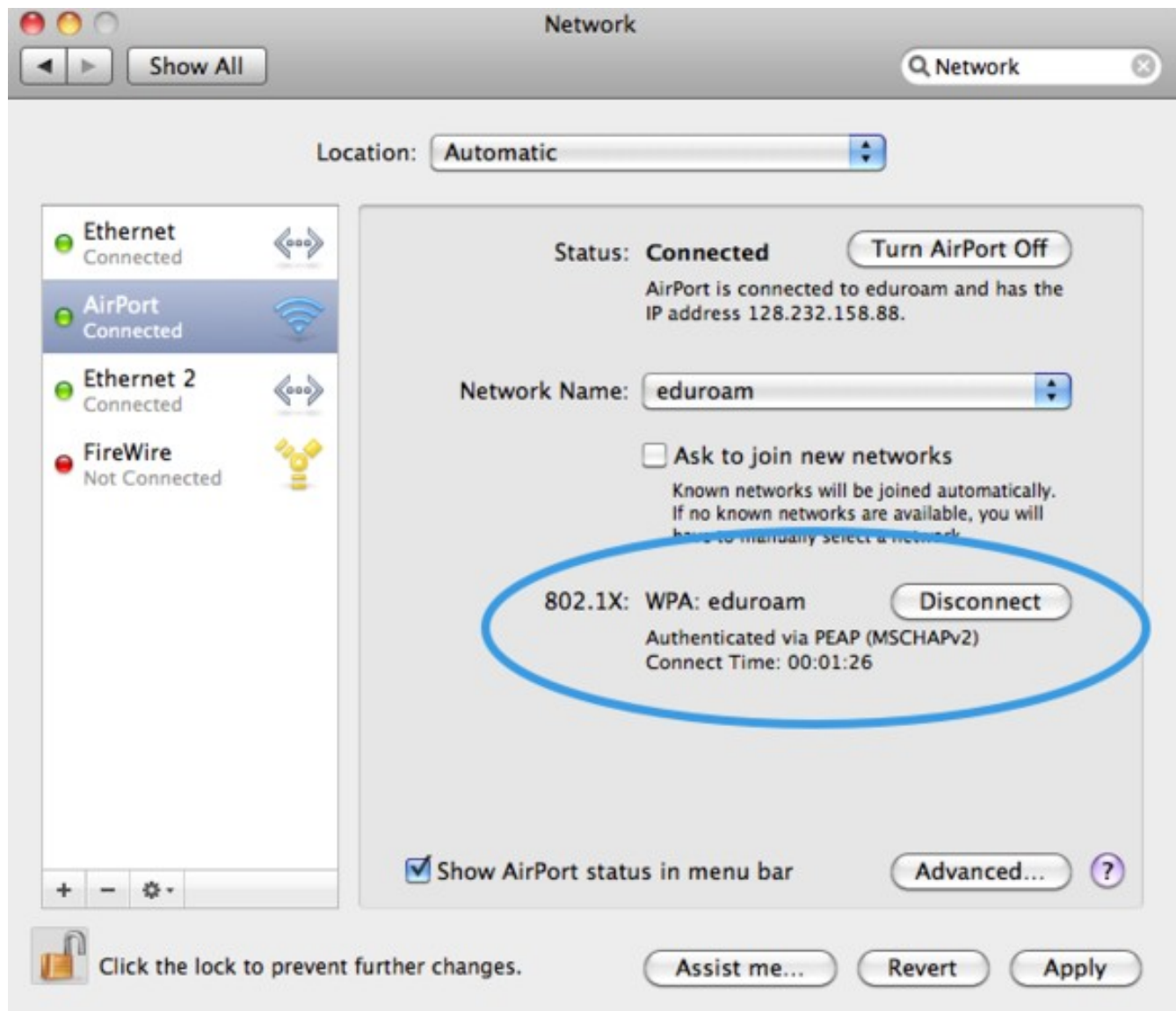
then select **OK** to close the pane

In order to automatically connect to eduroam you need to have this set as your preferred network; to do this choose the **AirPort** pane and drag **eduroam** to the top of the **Preferred Networks** list



then select **Apply** and then select **OK** to close the Advanced pane

You can now see that you are connected and authenticated



Select **Apply** to save the changes and close the window.

Your computer will now be authenticated to the network, after that you should be able to access the internet. If you get an error saying that authentication has failed, double-check the above steps. All the settings you have made are stored in your computer and should not need re-entering each time you connect to the eduroam network.